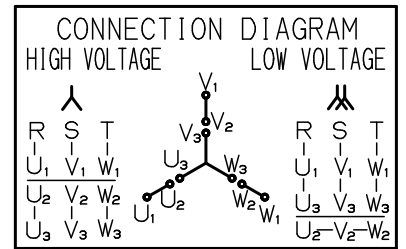
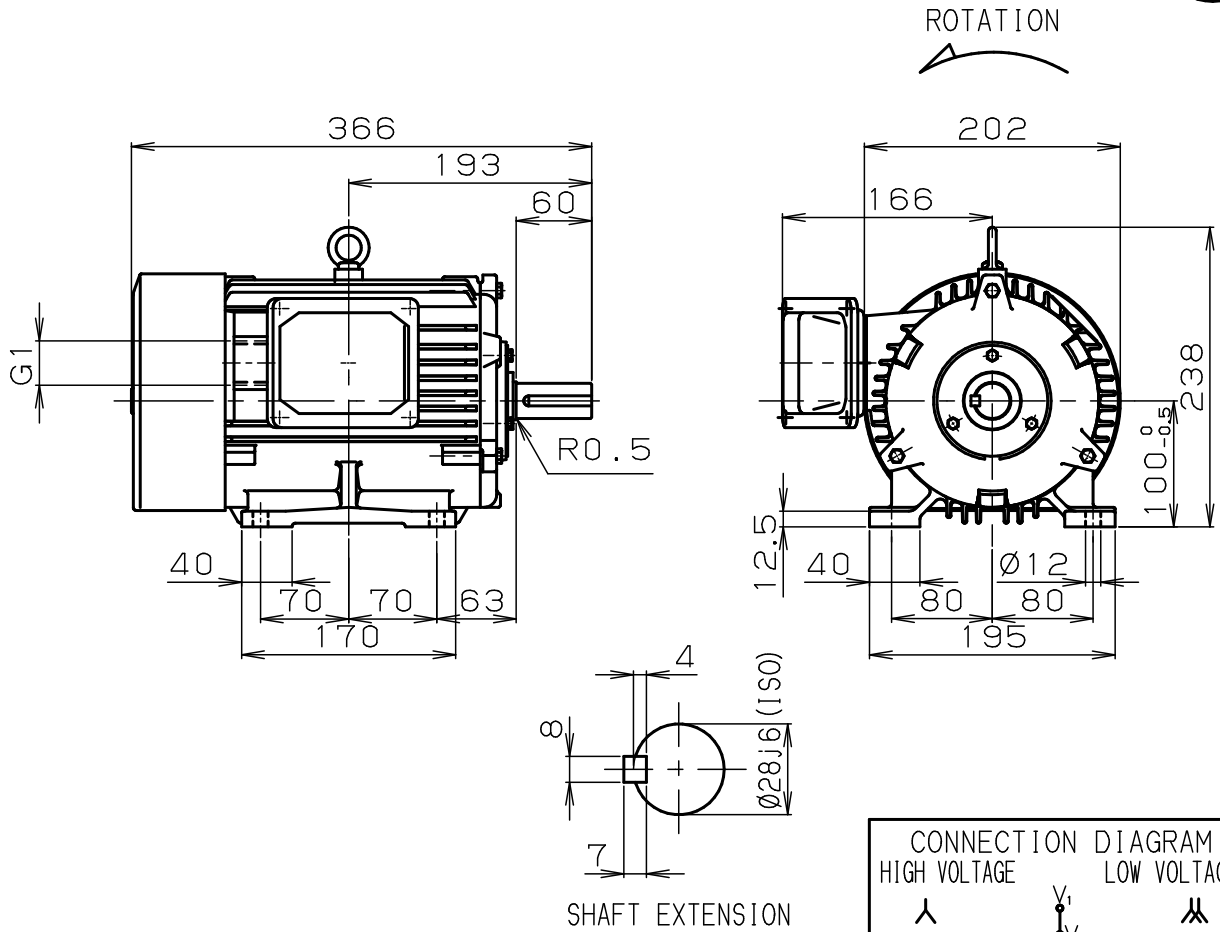


INDUCTION MOTOR (OUTDOOR USE)

RoHS

TOP
RUNNER



DIMENSIONS IN mm

MLU1107B	100L	4	3	2.2kW	200-400/200-400 220-440	50/60	1450/1740 1755
TYPE	FRAME	POLES	PH	OUTPUT	VOLT	Hz	min ⁻¹
9.5-4.8/8.5-4.3 8.3-4.2	S1	155 (F)	マンセル N1.2	IP55	JISC4213	IC411	
A M P	RATING	INSUL	COLOR	PROTECTION	RULE	COOLING	
88.5/89.5 89.9%	IE3/IE3 IE3				D-END	6206ZZ	
E F F	IE CODE				N-END	6205ZZ	
					BEARING		

CUSTOMER : _____ W. OD. _____

VIA : _____ ORDER NO. _____

APPLICATION : _____ W. NO. _____

	DATE	NAME	APPROVED		Fuji Electric Co., Ltd.
DRAWN					
CHECKED					
				DWG. NO	YH548221